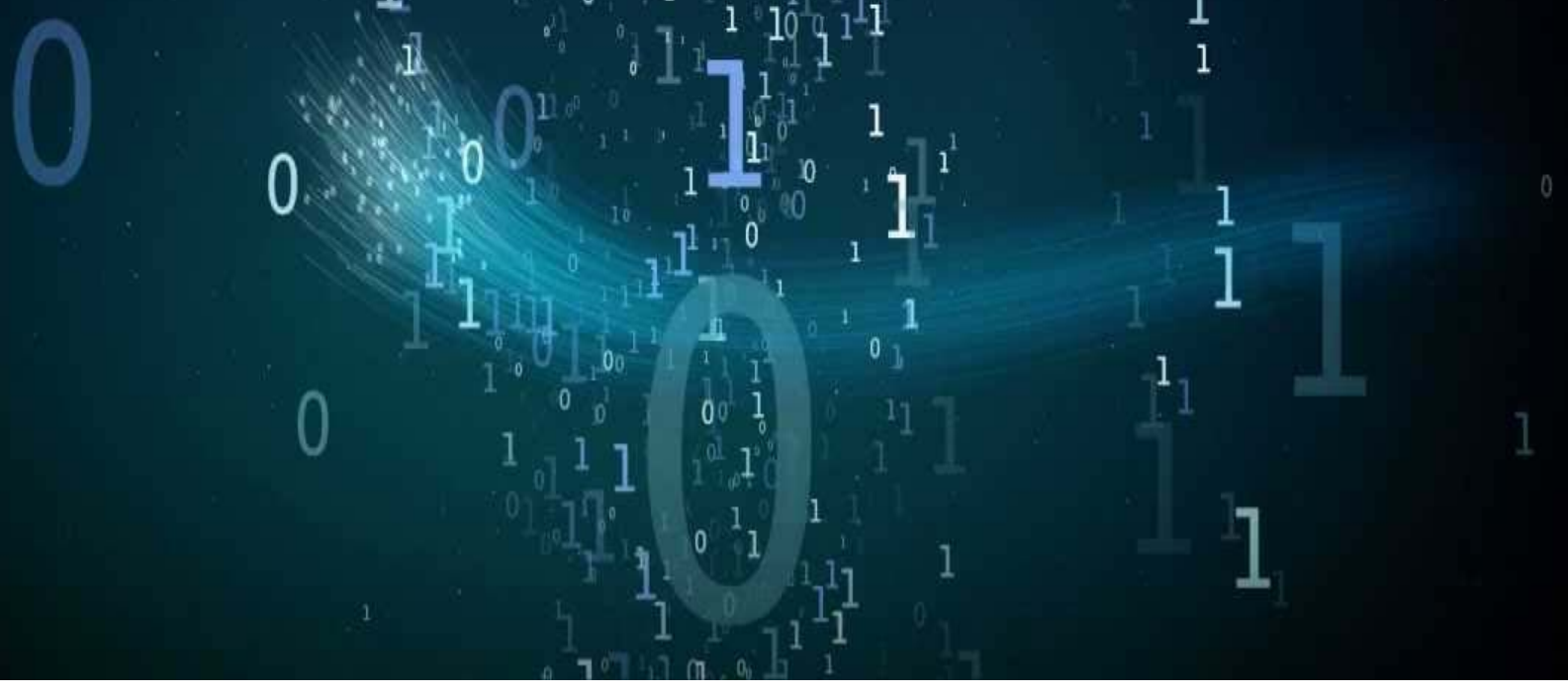


Packet Radio

Foster City ARES



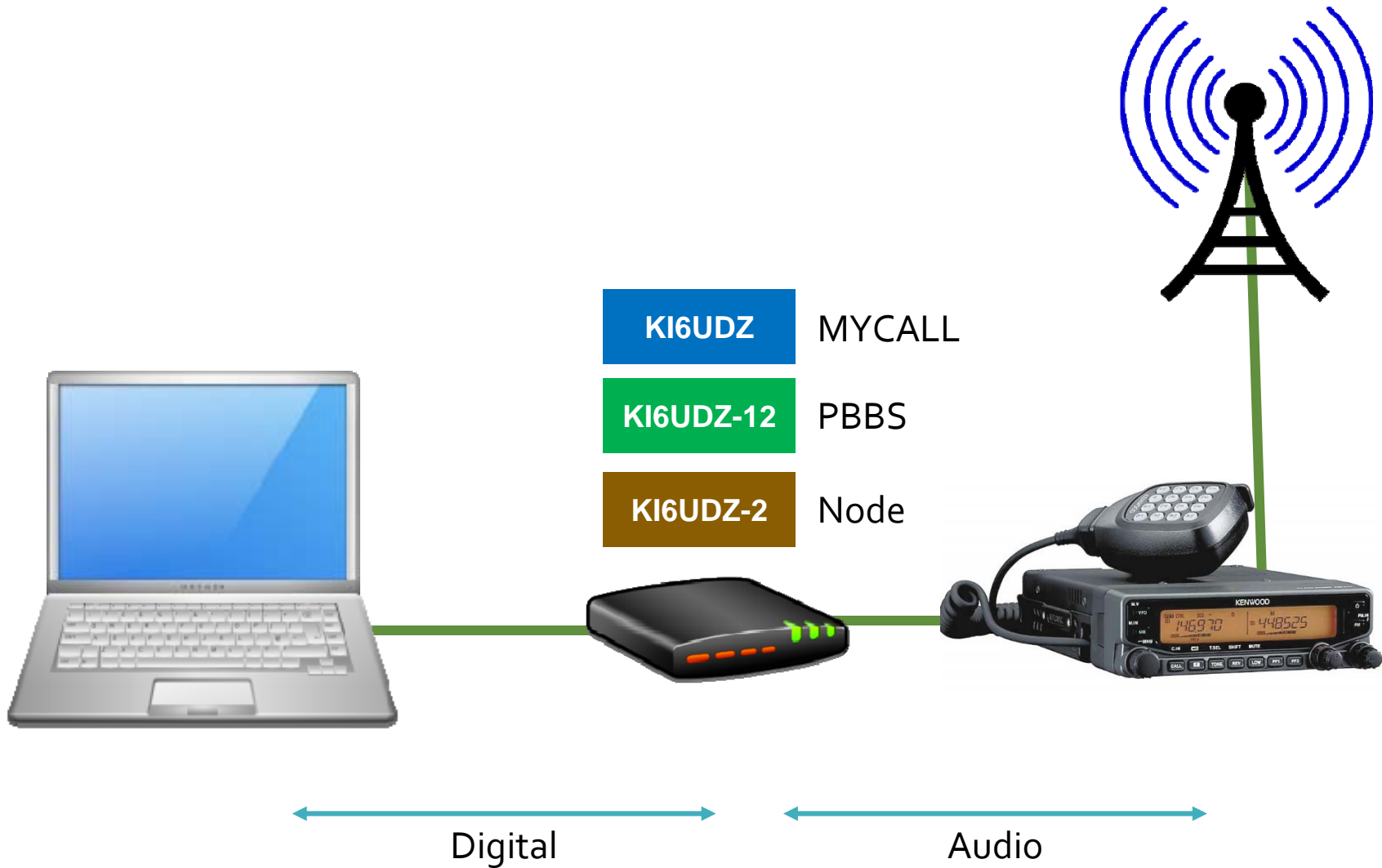
What is Packet Radio

- An error free digital mode
- Sends packets of information
- Different from one-letter-at-a-time modes (PSK₃₁, RTTY, CW)

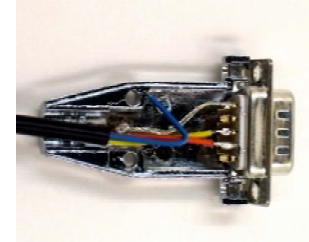


- Envelope contains **To & From** information
- Operates at **1200** or 9600 baud

Packet Radio Station



Packet Setup Hardware



Custom Cables

- Make your cables (\$)
- Buy your cables (\$\$\$)

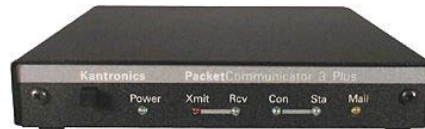


Computer

- Windows PC
- Windows Netbook

Software

- PUTTY
- Ipserial



Hardware TNC

- Kantronics KPC3+
- TNC-X

Software TNC

- AGWPE
- RIGblaster (all models)
- Signalink



Radio

- Dual-Band Mobile
- Data Port

Two Stations Connected

KI6UDZ



Radio

TNC

Computer



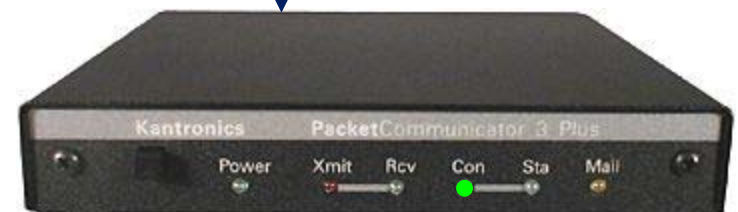
K2MAX



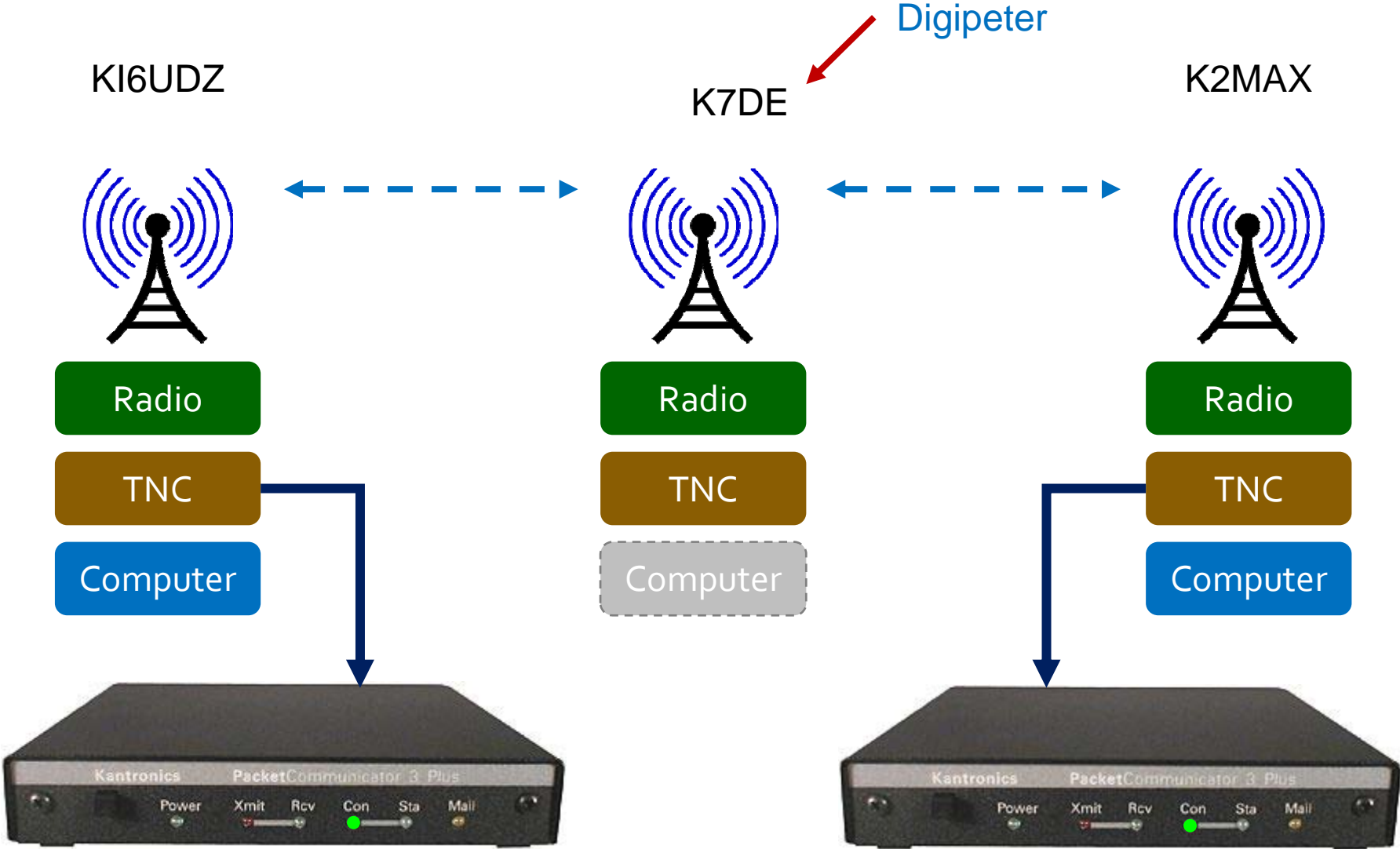
Radio

TNC

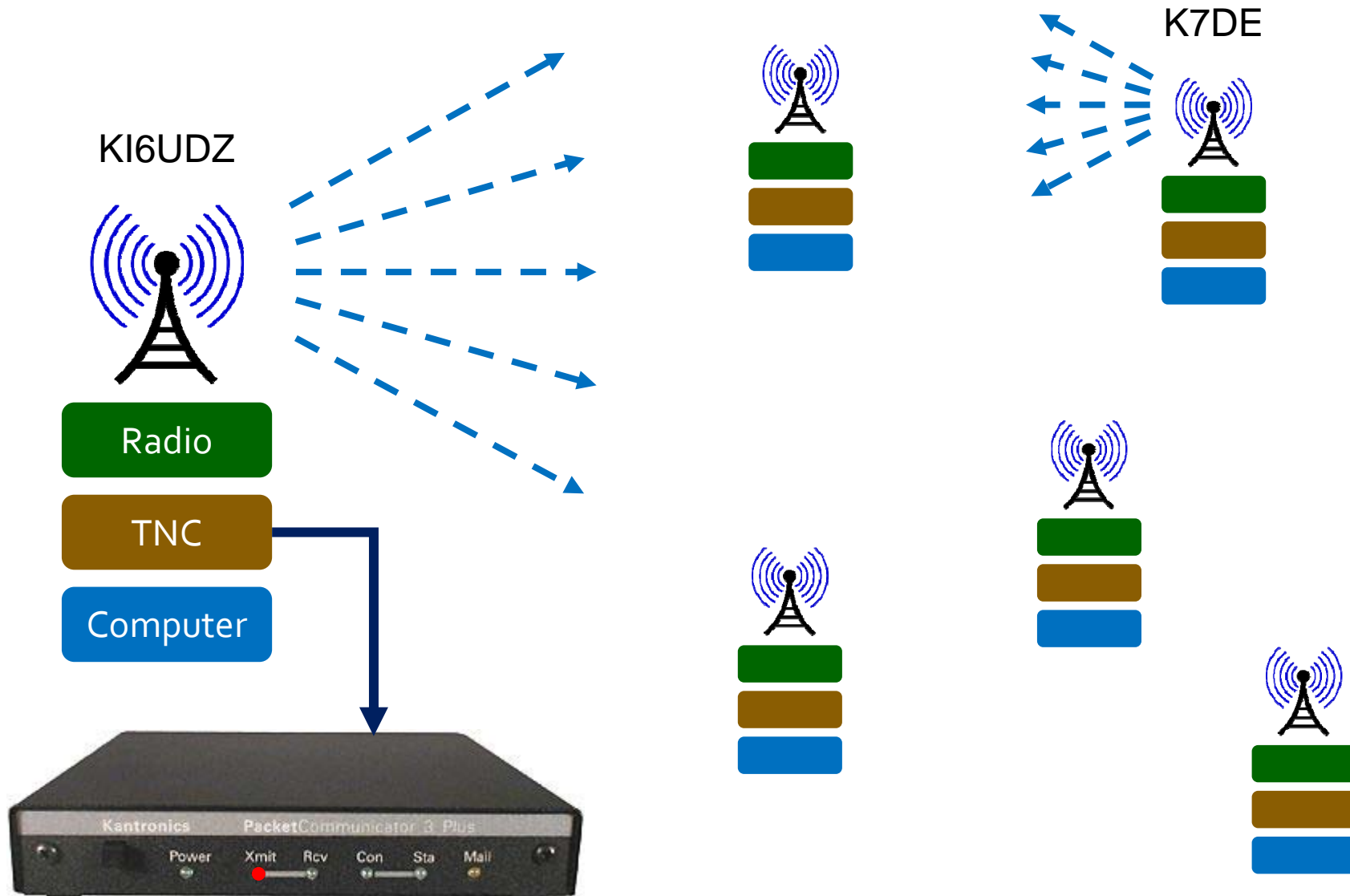
Computer



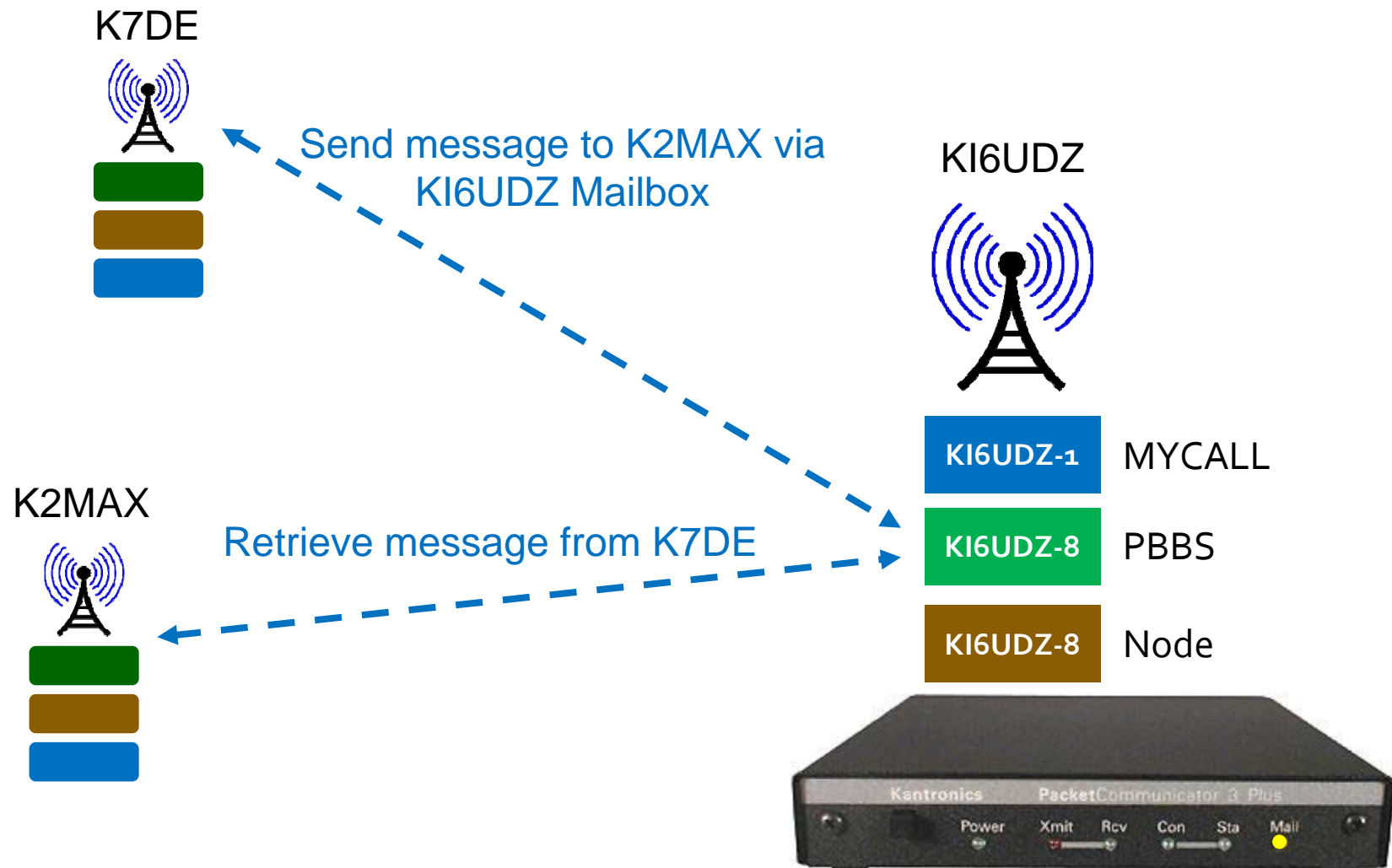
Two Stations Connected via Other Station(s)



Unconnected Protocol - UNPROTO



Personal Bulletin Board System (PBBS)

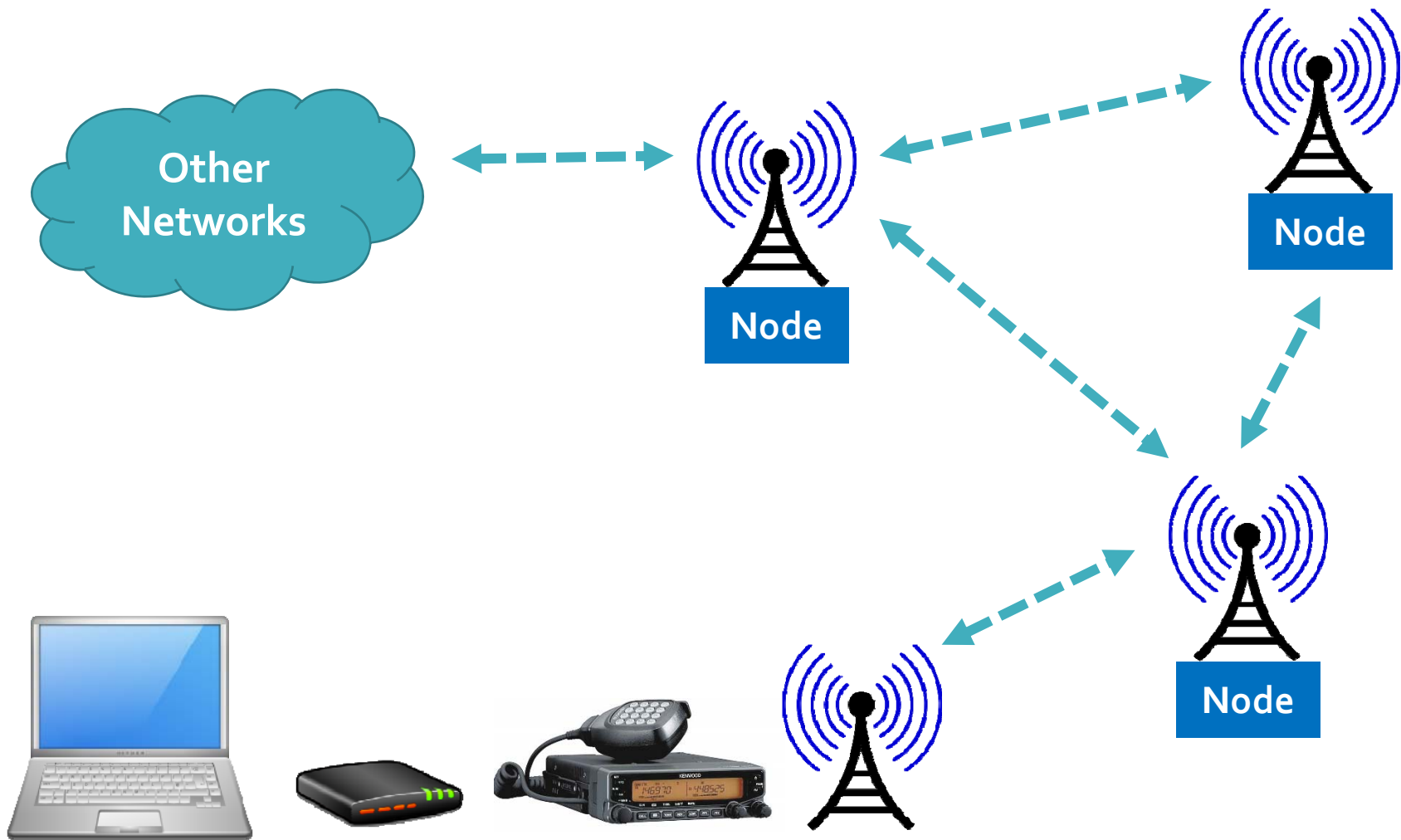


Local Bulletin Board System (BBS) & Nodes

- The first BBSs in Packet Radio were PC-Based, using software developed by Hank Oredson, W0RLI.
- A national system of Packet BBS exists that permit automatic forwarding of messages and files from one BBS to another.
- Packet can handle email and Winlink messages using gateways

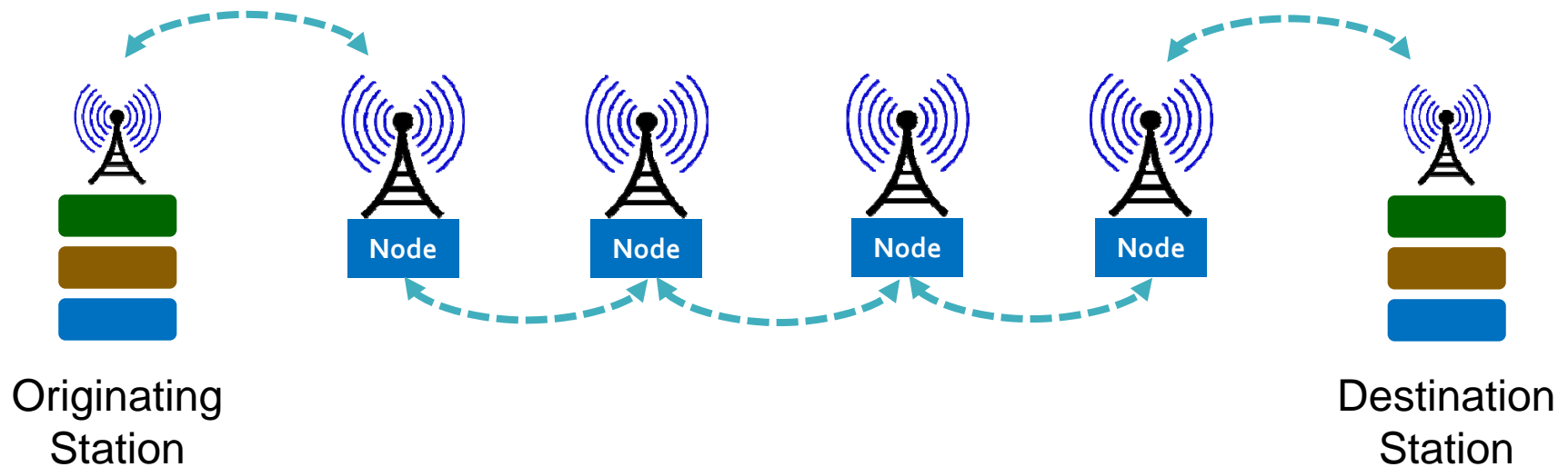


Packet Radio Station BBS & BBS System



Basic Packet Station

K-Net vs. KA-Node



K-Net

- Packets with errors must be sent from the first node in the link.
- Slow because lost/damaged packets take a while to resend.

KA-Node

- Errors are corrected by resending from the last station only.
- Much faster than K-Net.

Packet Frequencies

Northern California

Frequency	Northern California Band Plan
144.31	Emergency Packet / Non-Emergency General Use
144.33	Telemetry & Experimental
144.35	Keyboard to Keyboard, Mailbox
144.37	BBS Forwarding
144.93	Not Allocated. Packet OK, but nothing permanent.
144.95	Not Allocated. Packet OK, but nothing permanent.
145.03	Keyboard to Keyboard, Mailbox
145.05	Keyboard to Keyboard, Mailbox
145.07	Not Allocated. Packet OK, but nothing permanent.
145.09	BBS
145.67	Only Northern California DX Packet Spotting Network (DXPSN) Activity
145.69	Emergency Packet / Non-Emergency General Use
145.71	Only Northern California DX Packet Spotting Network (DXPSN) Activity
145.73	Emergency Packet / Non-Emergency General Use
145.75	Emergency Packet / Non-Emergency General Use
145.77	Only Northern California DX Packet Spotting Network (DXPSN) Activity

Further Reading

Santa Clara Packet Radio

<https://www.scc-ares-races.org/packet.html>

Intro to Packet Radio by Larry Kenney, WB9LOZ

<http://www.choisser.com/packet/>

Kantronics KPC3 Manual

http://www.kantronics.com/documents/kpc-3plus_manual_RevD.pdf